

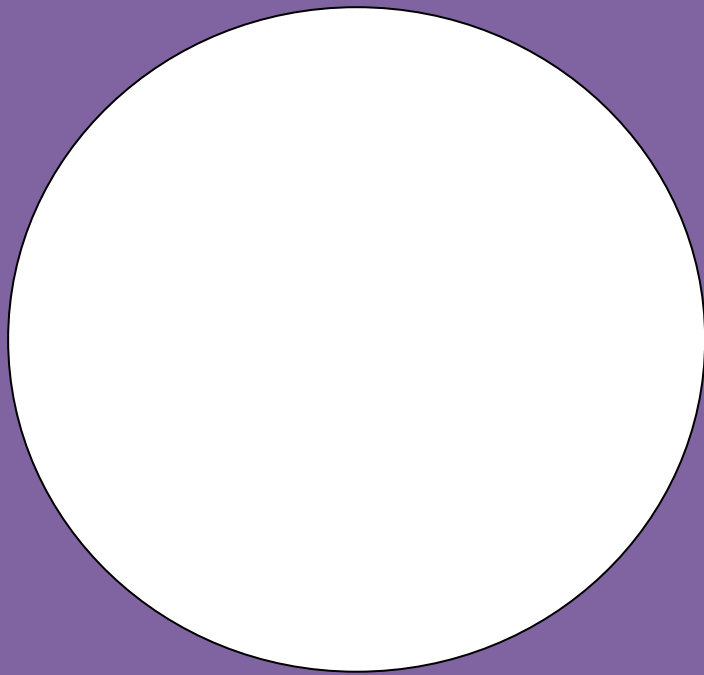
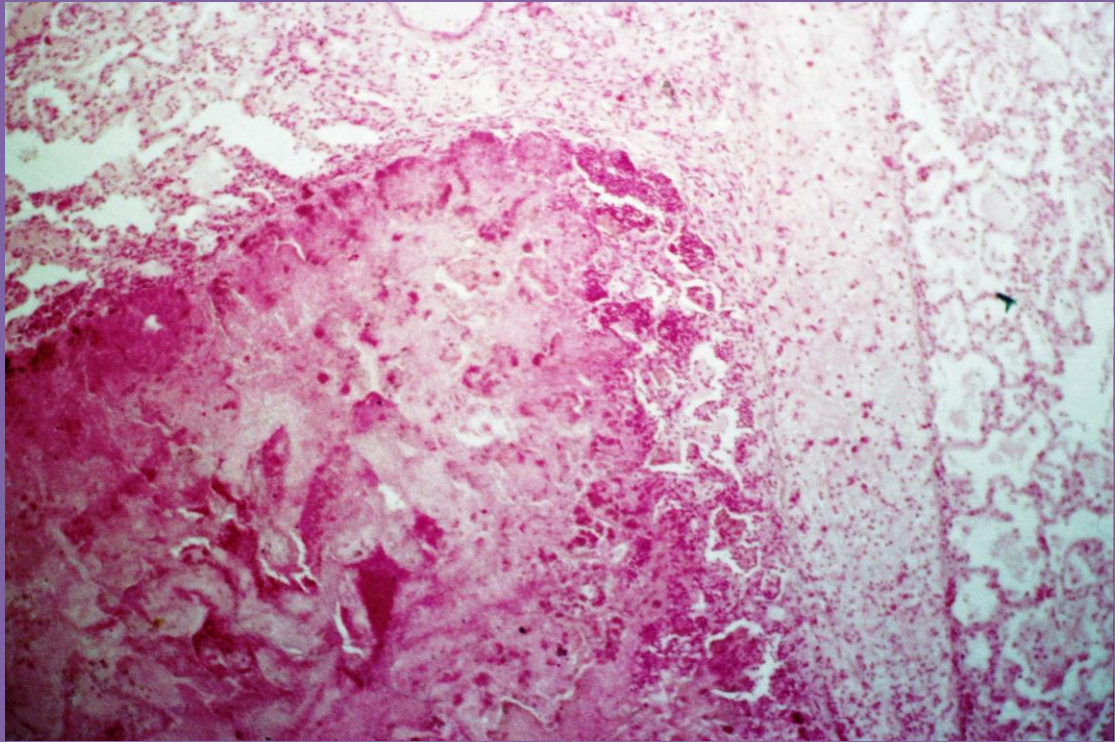
Organ: Lung

Stain: H & E

Lesion: liquifactive necrosis

Microscopical findings:

1. The affected pulmonary tissue become homogenous , structureless , eosinophilic and basophilic substances infiltrated with polymorphonuclear leukocytes (pus).
2. The surrounding pulmonary tissue suffering from leukocytic infiltration of mononuclear and polymorphonuclear type.
3. The pulmonary blood vessels and interalveolar blood capillaries are dilated and filled with blood.



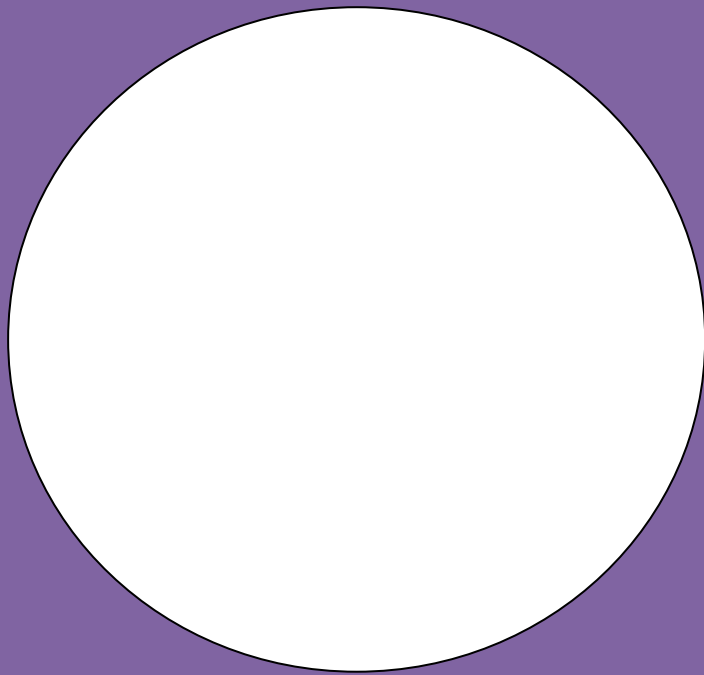
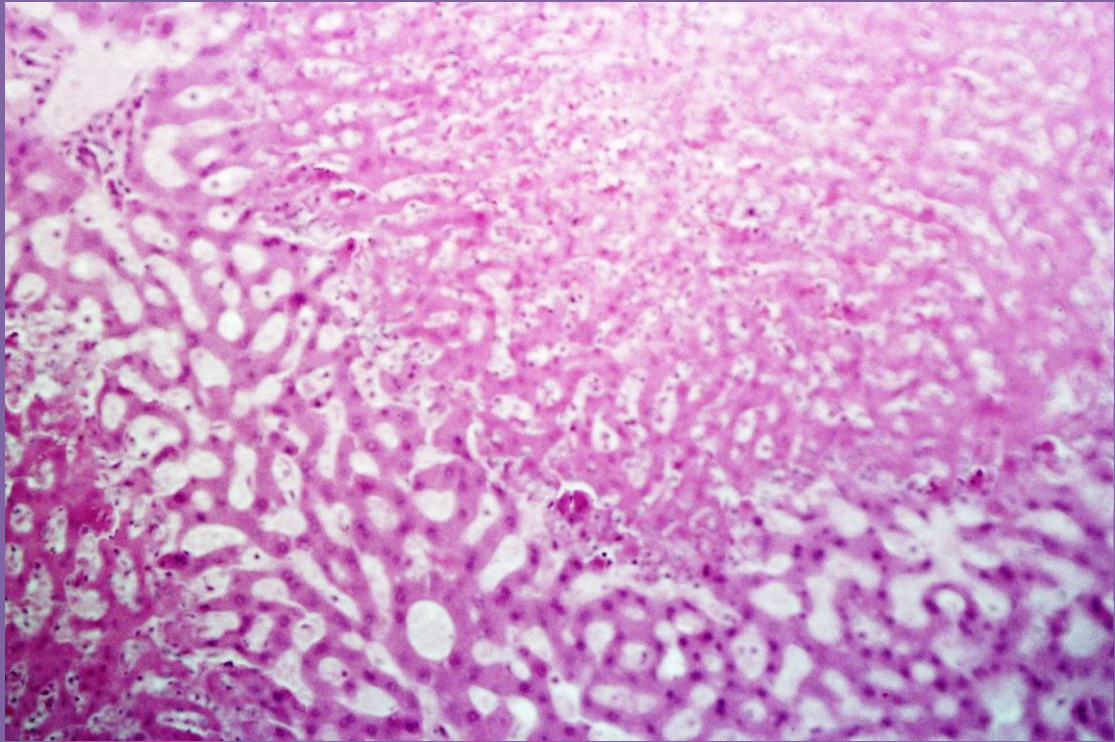
Organ: Liver

Stain: H & E

Lesion: coagulative necrosis

Microscopical findings:

1. The tissue architecture of the hepatic cords are maintained but the cellular details are lost.
2. The affected necrotic areas appear as more homogenous and more eosinophilic structureless areas.
3. The nuclei of the hepatocytes in the necrotic areas showing different degree of necrotic changes (pyknotic ,karyoretic or karyolysis).
1. The rest of hepatocytes showing different degree from degenerative changes.



Organ: Lymph node

Stain: H & E

Lesion: Caseous necrosis

Microscopical findings:

1. The affected lymphoid tissues are replaced by eosinophilic and basophilic granular substances.
2. Both cellular details and tissues architecture of the necrotic tissues are lost.

